

UC San Diego

LeaseConverge.com

# CONVERGE

*Governor Park*

UC San Diego Innovation Hub





# WHERE IDEAS CONVERGE

260,000 r.s.f. four building office campus  
6333, 6363, 6165 & 6256 Greenwich Dr.

Situated in Governor Park, Converge offers Class A quality office space with efficient, flexible layouts, convenience, excellent visibility and immediate access to Interstate 805. With minimized commute times and close proximity to UTC, Downtown, East County and Highway 56, this location is ideal. On-site amenities include EV charging stations (6256) and showers and changing facilities. A new modern concept cafe is underway at 6165 Greenwich Drive.



# GREEN SPOT SALAD

Now Open

**CONVERGE** Governor Park  
UC San Diego Innovation Hub

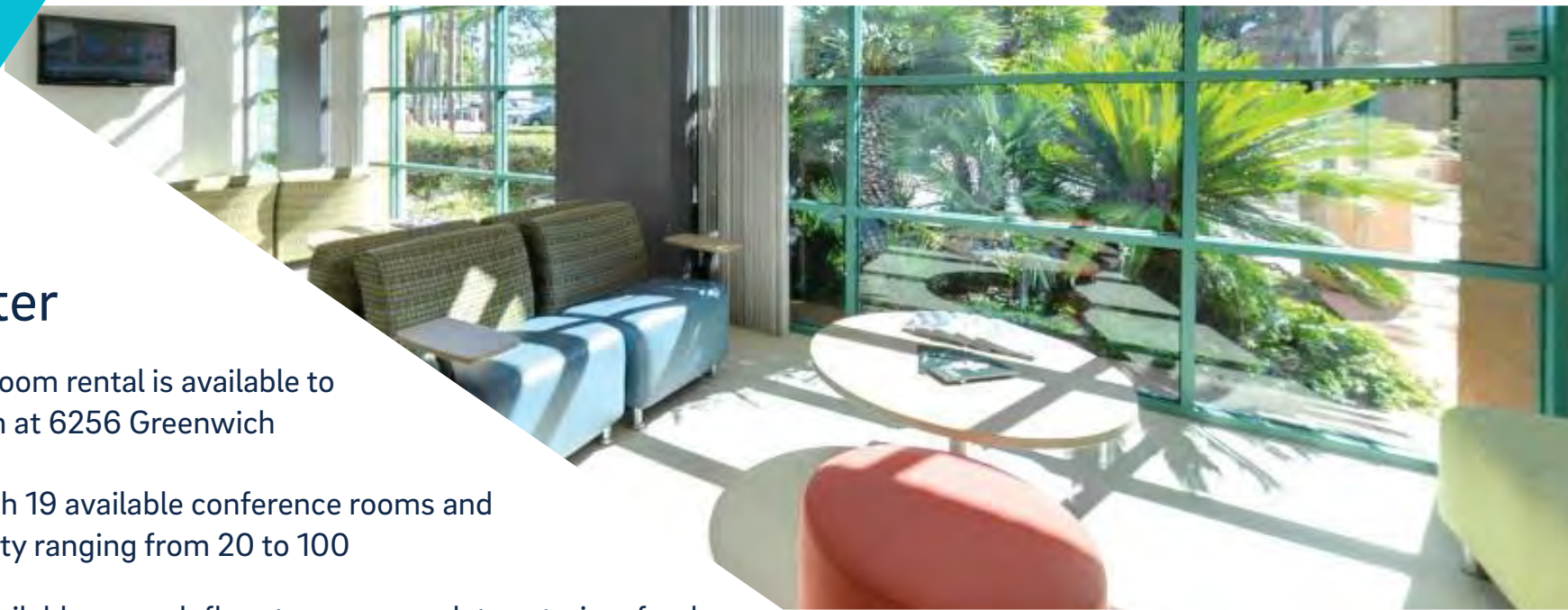


Offering Salads, Bowls,  
Wraps and Flatbreads  
Located at 6165 Greenwich

- **Convenient Ordering Options:**  
In-store, Online, Delivery  
and Catering
- All natural ingredients
- Indoor seating and large outdoor  
patio seating available







## UCSD Extension Conference Center

Event space and conference room rental is available to tenants from UCSD Extension at 6256 Greenwich

- 3 floors of event space with 19 available conference rooms and computer labs with capacity ranging from 20 to 100
- Functional kitchens are available on each floor to accommodate catering, food and beverages
- Conference rooms available for a nominal fee

# 6333-6363 GREENWICH

## Availability

### 6333 Greenwich Drive

Suite	RSF	Description
150	3,766	Upgraded corner suite with excellent windowline.
205	1,953	4 offices on the window, interior conference room, reception, kitchen/work room and small open area.

### 6363 Greenwich Drive

Suite	RSF	Description
175	4,713	Ground floor suite with dedicated exterior suite entrance.





CONVERGE  
UC San Diego Innovation Hub

6333

**CONVERGE** Converge Point  
UC San Diego Innovation Hub

← **6333**                      **6363** →

UC San Diego Health                      UC San Diego Health  
UC San Diego Centers for Integrative Health

858-410-2455                      JLL

UC San Diego

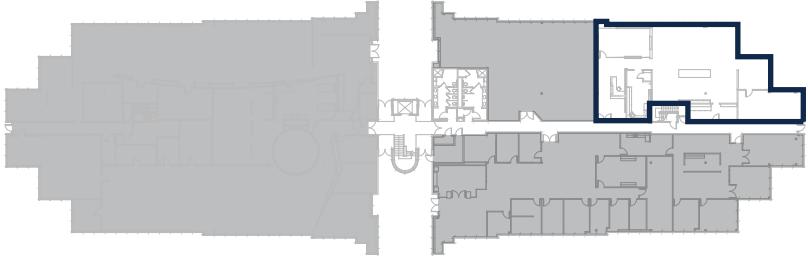
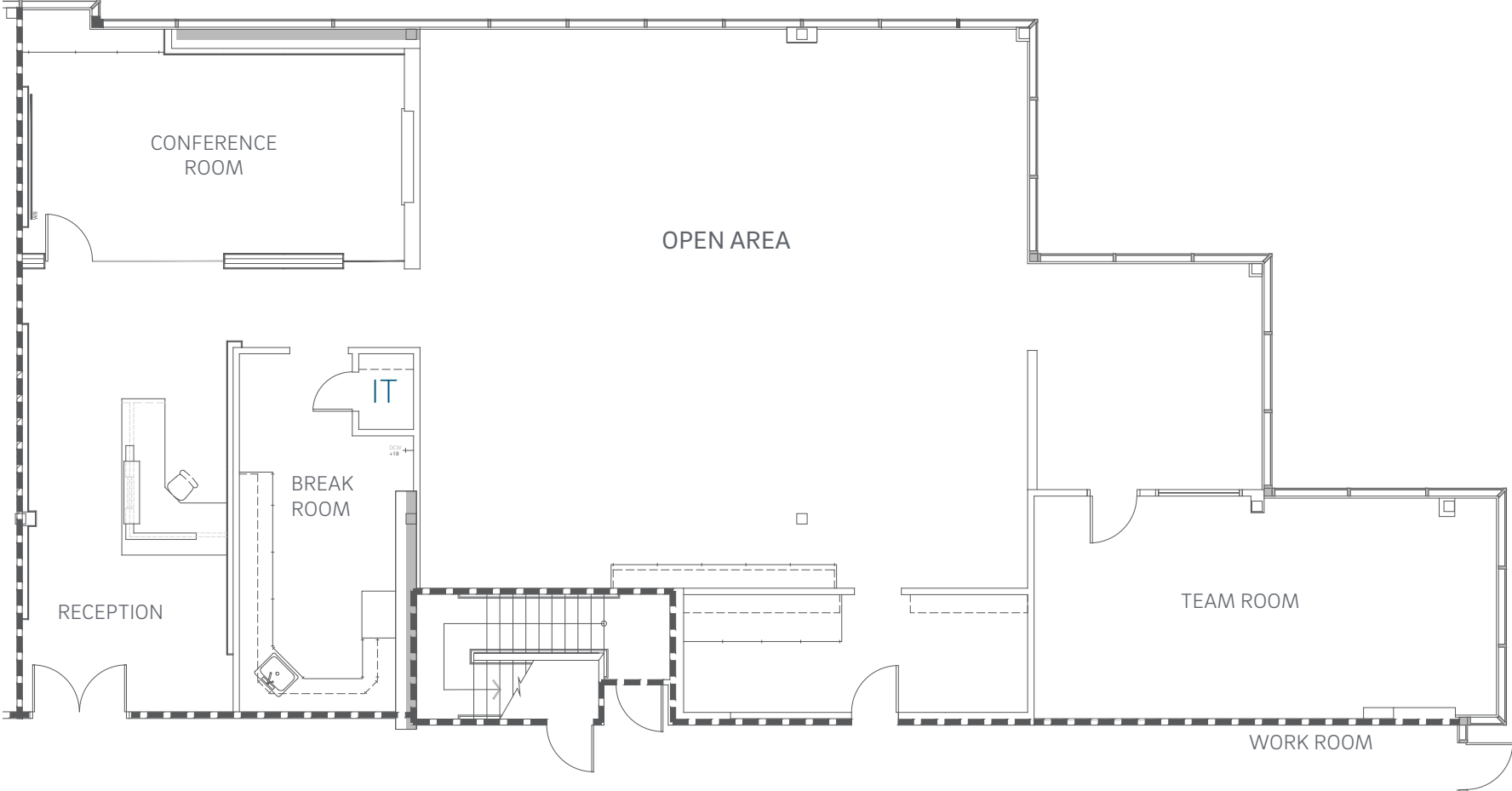


# 6333 Greenwich Drive

## Suite 150 | 3,766 RSF



Virtual Tour - 6333\_Suite 150



Bess Wakeman  
858.410.1245  
bess.wakeman@jll.com  
RE Lic. No. 01177659

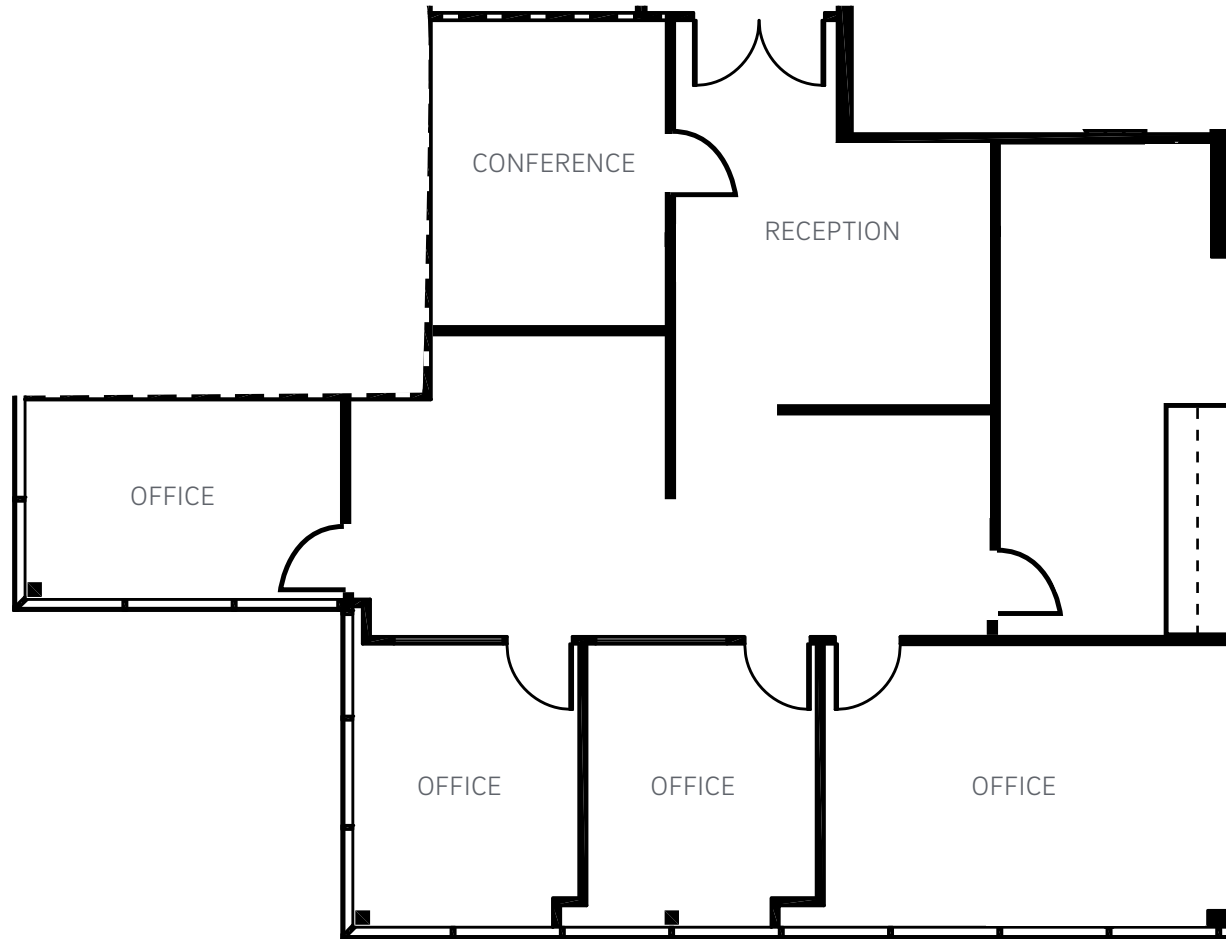
Richard Gonor  
858.410.1243  
richard.gonor@jll.com  
RE Lic. No. 01142178



# 6333 Greenwich Drive Suites 205 | 1,953 RSF



Virtual Tour - 6333\_Suite 205



Bess Wakeman  
858.410.1245  
bess.wakeman@jll.com  
RE Lic. No. 01177659

Richard Gonor  
858.410.1243  
richard.gonor@jll.com  
RE Lic. No. 01142178

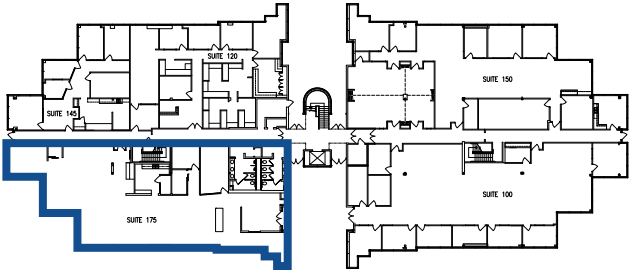
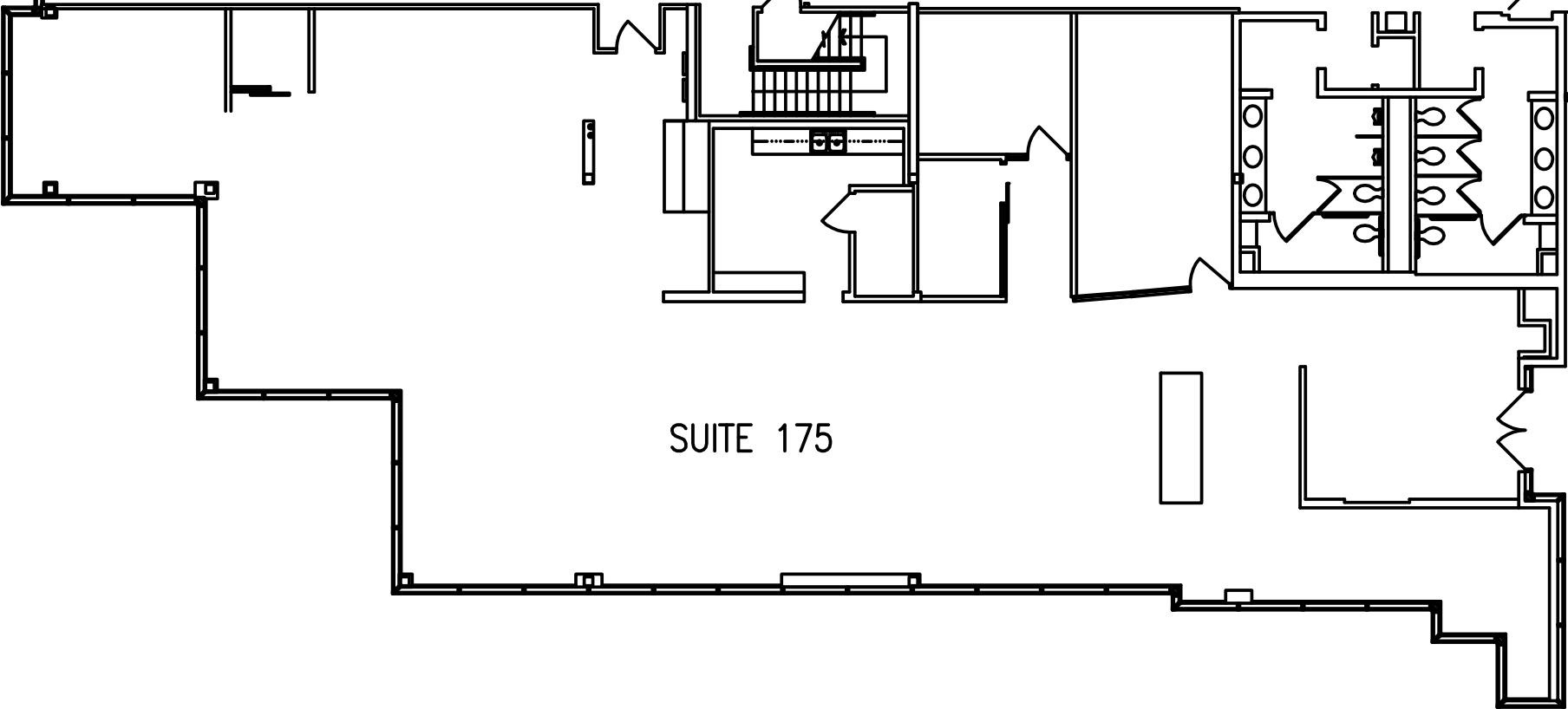


# 6363 Greenwich Drive

## Suites 175 | 4,713 RSF



Virtual Tour - 6333\_Suite 175



Bess Wakeman  
858.410.1245  
bess.wakeman@jll.com  
RE Lic. No. 01177659

Richard Gonor  
858.410.1243  
richard.gonor@jll.com  
RE Lic. No. 01142178







# 6165-6256 GREENWICH

## Availability

### 6165 Greenwich Drive

Suite	RSF	Description
110	4,938	Ground floor corner suite with prominent location at Building entrance. 10 private offices, reception, conference, open area, large work room and large kitchen.
120	970	2 private offices on the window, open area and 2 interior offices. (Available with 60 days notice)
180	5,583	Ground floor opportunity with abundant window line. New layout with mix of open space and private offices planned.

### 6256 Greenwich Drive

Suite	RSF	Description
425	7,923	Recently completed spec suite! Prominent glass double door entry. Perimeter private offices and large open area. Building signage available.







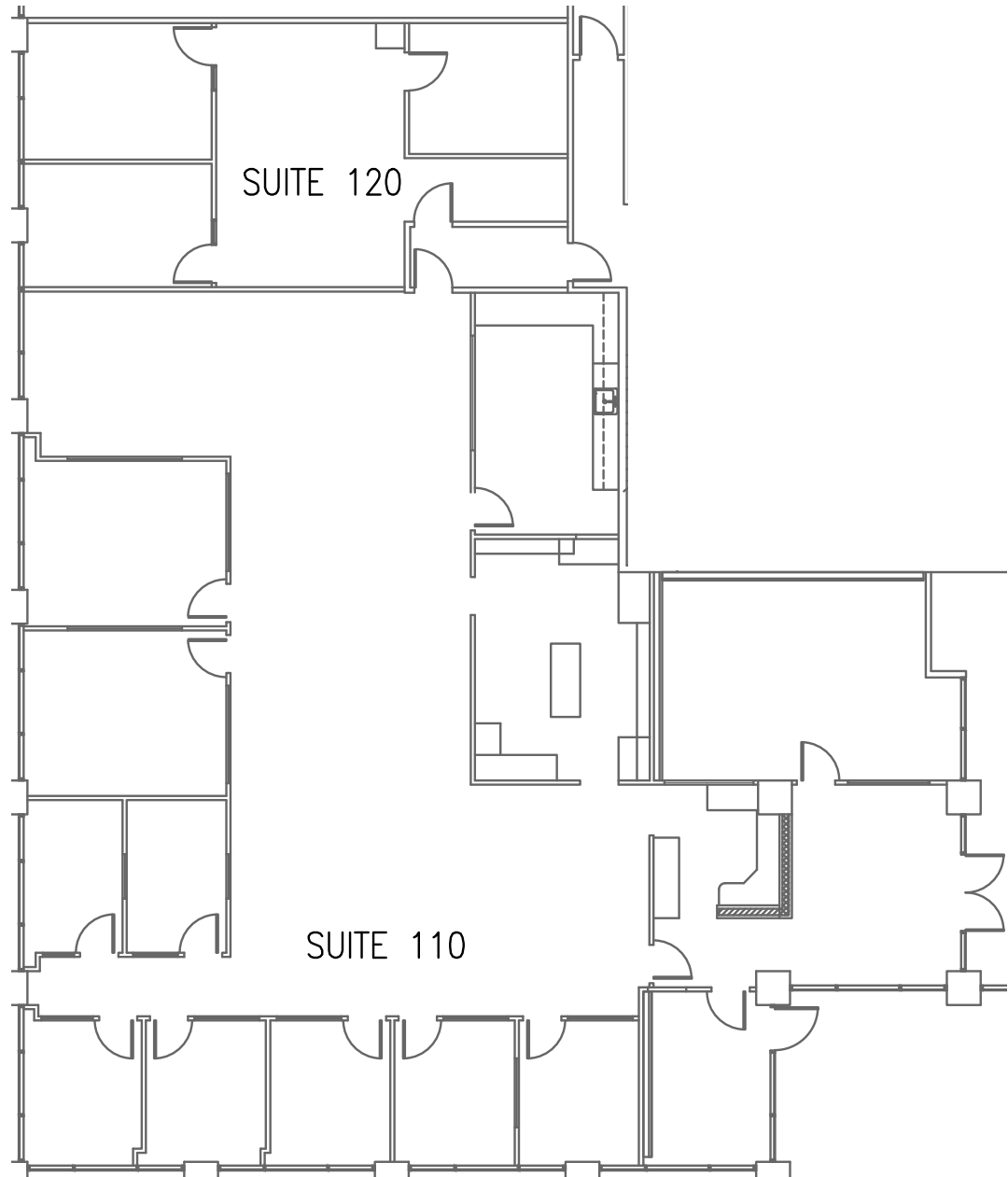
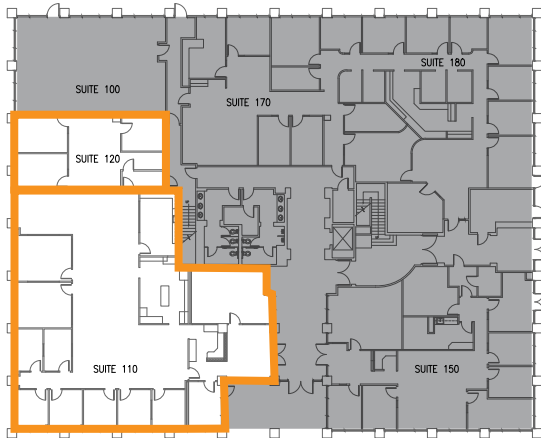
# 6165 Greenwich Drive

Suite 110\* | 4,938 RSF  
Available January 2024

Suite 120\* | 970 RSF  
Available with 60 days notice

 Virtual Tour - 6165 Suite\_120

\*Suites are contiguous for up to ± 6k RSF



Bess Wakeman  
858.410.1245  
bess.wakeman@jll.com  
RE Lic. No. 01177659

Richard Gonor  
858.410.1243  
richard.gonor@jll.com  
RE Lic. No. 01142178



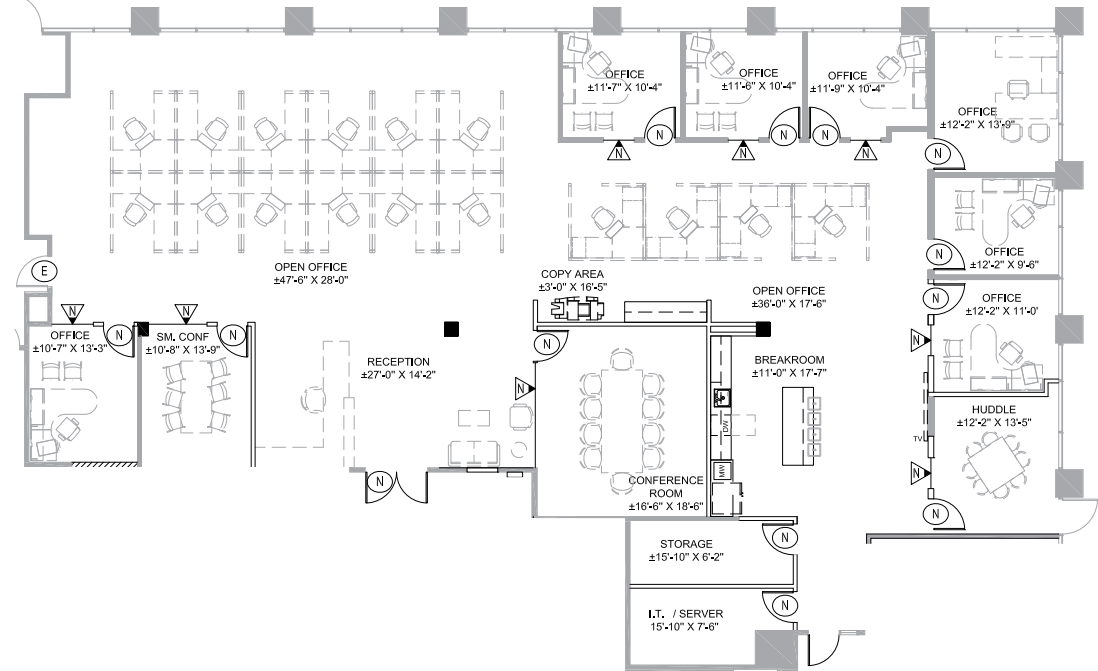
# 6165 Greenwich Drive

Suite 180 | 5,583 RSF

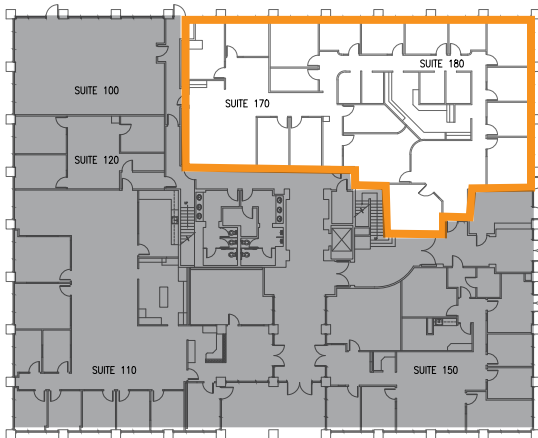
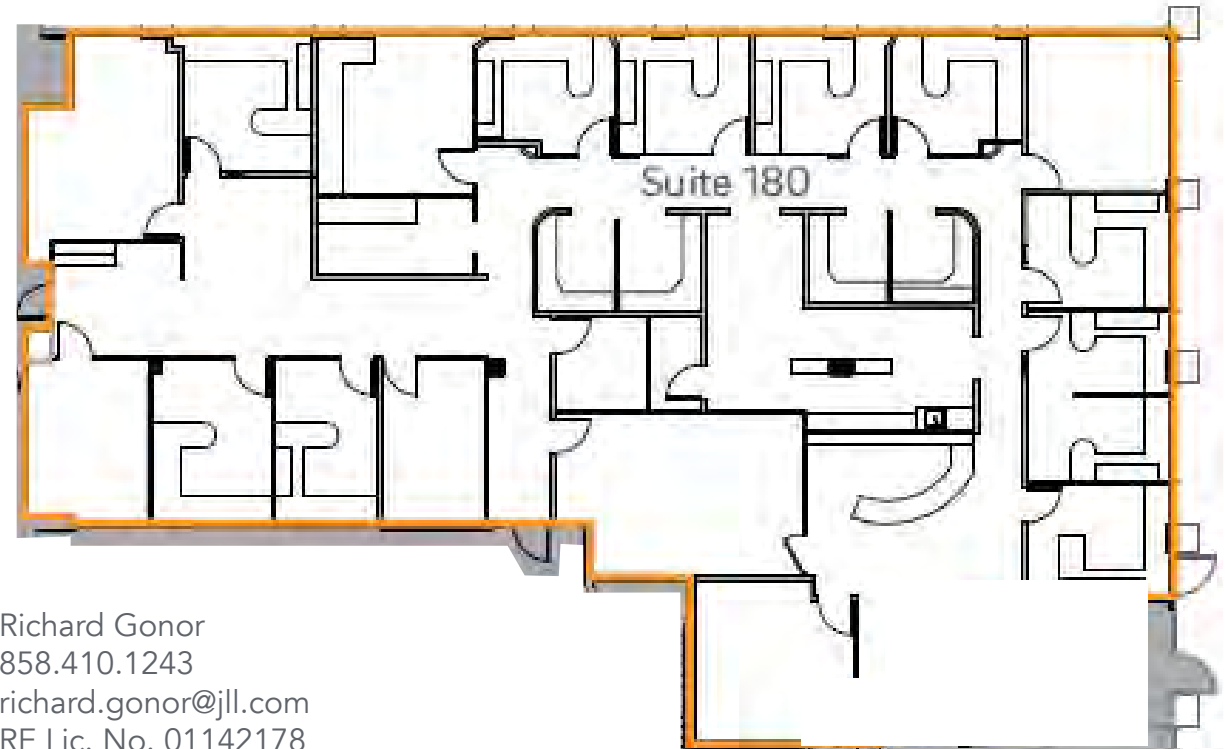


Virtual Tour - 6165\_Suite 180

### Hypothetical Plan



### As Built Plan



Bess Wakeman  
858.410.1245  
bess.wakeman@jll.com  
RE Lic. No. 01177659

Richard Gonor  
858.410.1243  
richard.gonor@jll.com  
RE Lic. No. 01142178



UCSD Extension

YOUR NAME HERE

6256 CONVERGE  
UC San Diego

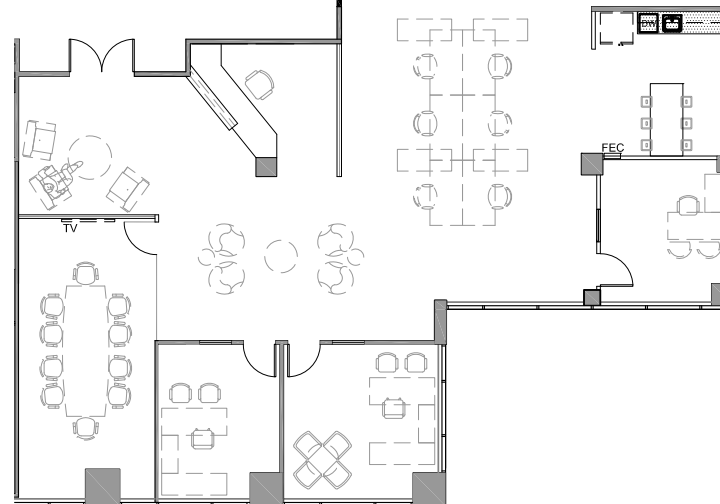
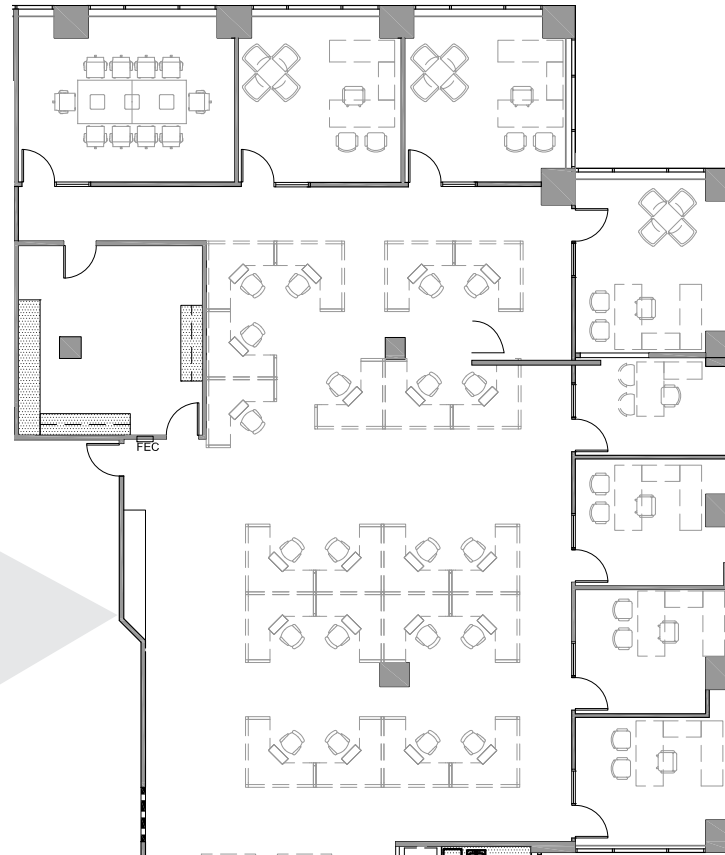




# 6256 Greenwich Drive Suite 425 | 7,923 RSF

Building Signage Available

 Virtual Tour - 6256\_Suite 425



Bess Wakeman  
858.410.1245  
bess.wakeman@jll.com  
RE Lic. No. 01177659

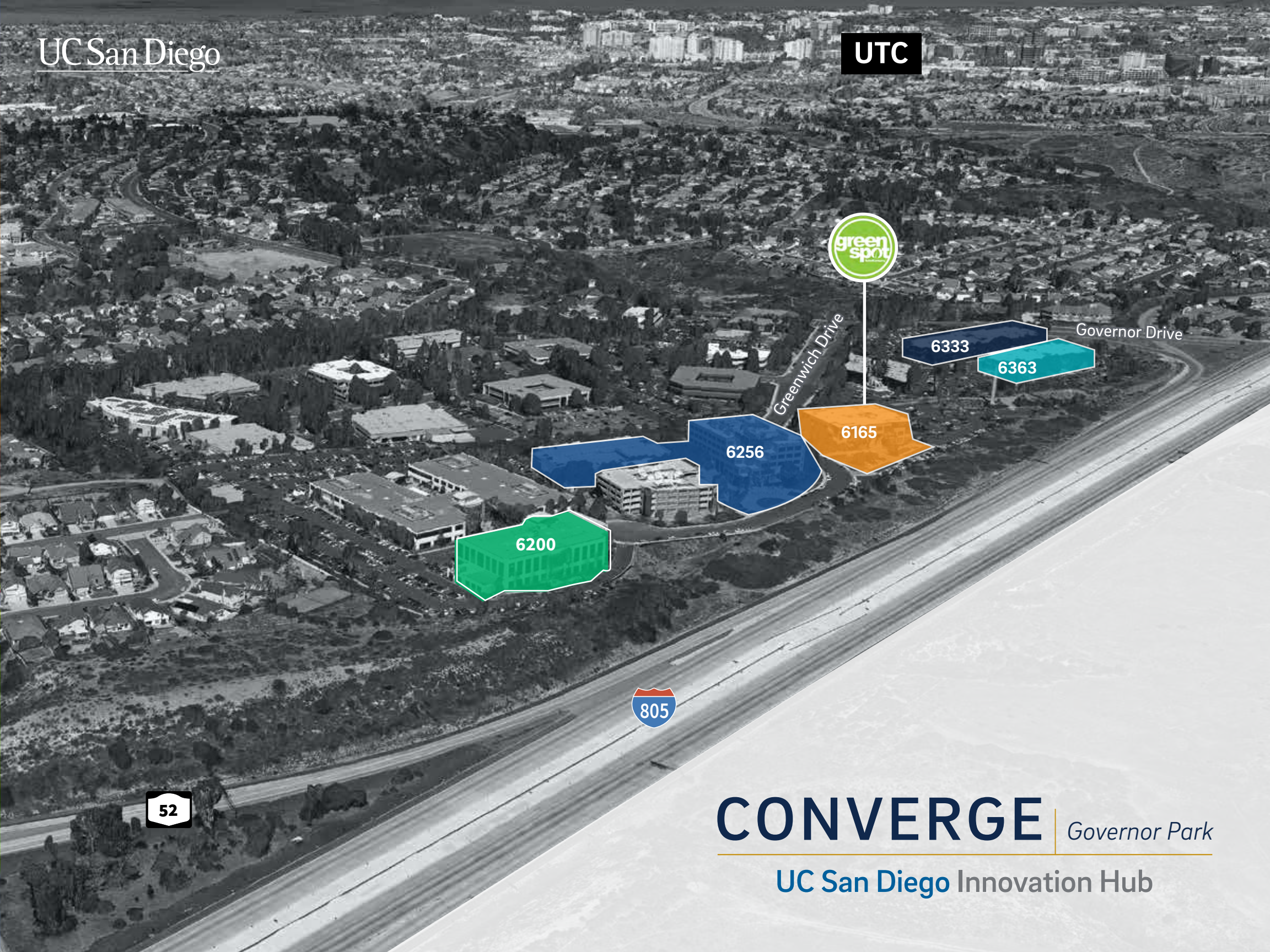
Richard Gonor  
858.410.1243  
richard.gonor@jll.com  
RE Lic. No. 01142178





UCSD Extension





# CONVERGE

*Governor Park*

---

UC San Diego Innovation Hub

UC San Diego

LeaseConverge.com

# CONVERGE

*Governor Park*

UC San Diego Innovation Hub



Bess Wakeman  
858.410.1245  
bess.wakeman@jll.com  
RE Lic. No. 01177659

Richard Gonor  
858.410.1243  
richard.gonor@jll.com  
RE Lic. No. 01142178

Although information has been obtained from sources deemed reliable, neither Owner nor JLL makes any guarantees, warranties, or representations, express or implied, as to the completeness or accuracy as to the information contained herein. Any projections, opinions, assumptions or estimates used are for example only. There may be differences between projected and actual results and those differences may be material. The property may be withdrawn without notice. Neither Owner nor JLL accepts any liability for any loss or damage suffered by any party resulting from reliance on this information. If the recipient of this information has signed a confidentiality agreement regarding this matter, this information is subject to the terms of that agreement. ©2023 Jones Lang LaSalle IP, Inc. All rights reserved.